

 SHIPPYhouse



 TINY HOUSES CATALOGUE

SHIPPING CONTAINER HOMES

THAT TAKE CARE OF YOU AND THE PLANET

www.shippyhouse.com

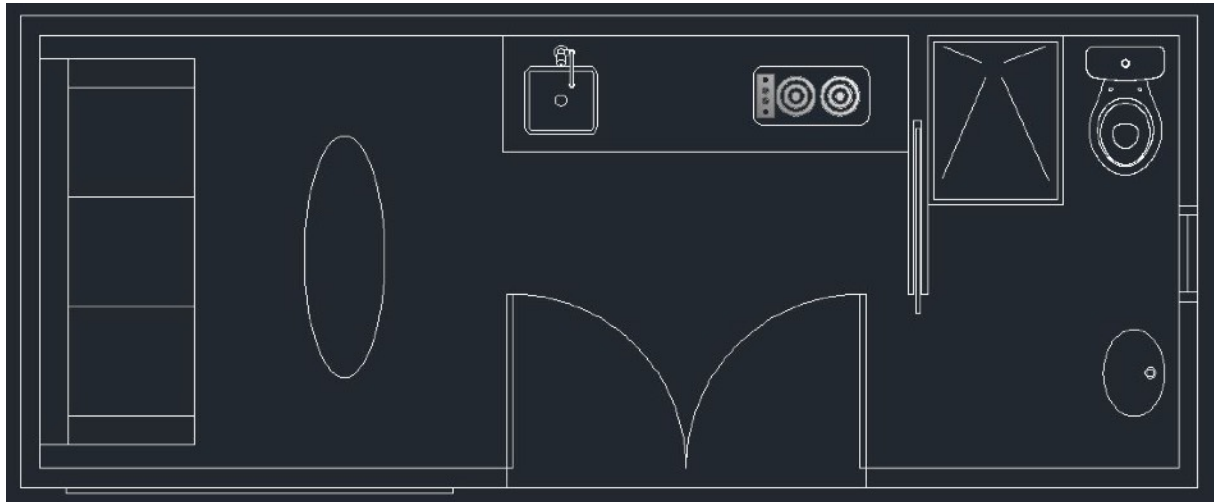
20 feet, Basic

This basic model provides a great space with a stable regulated temperature, which is ideal as an office, wine cellar, gym, greenhouse, guest room, etc.



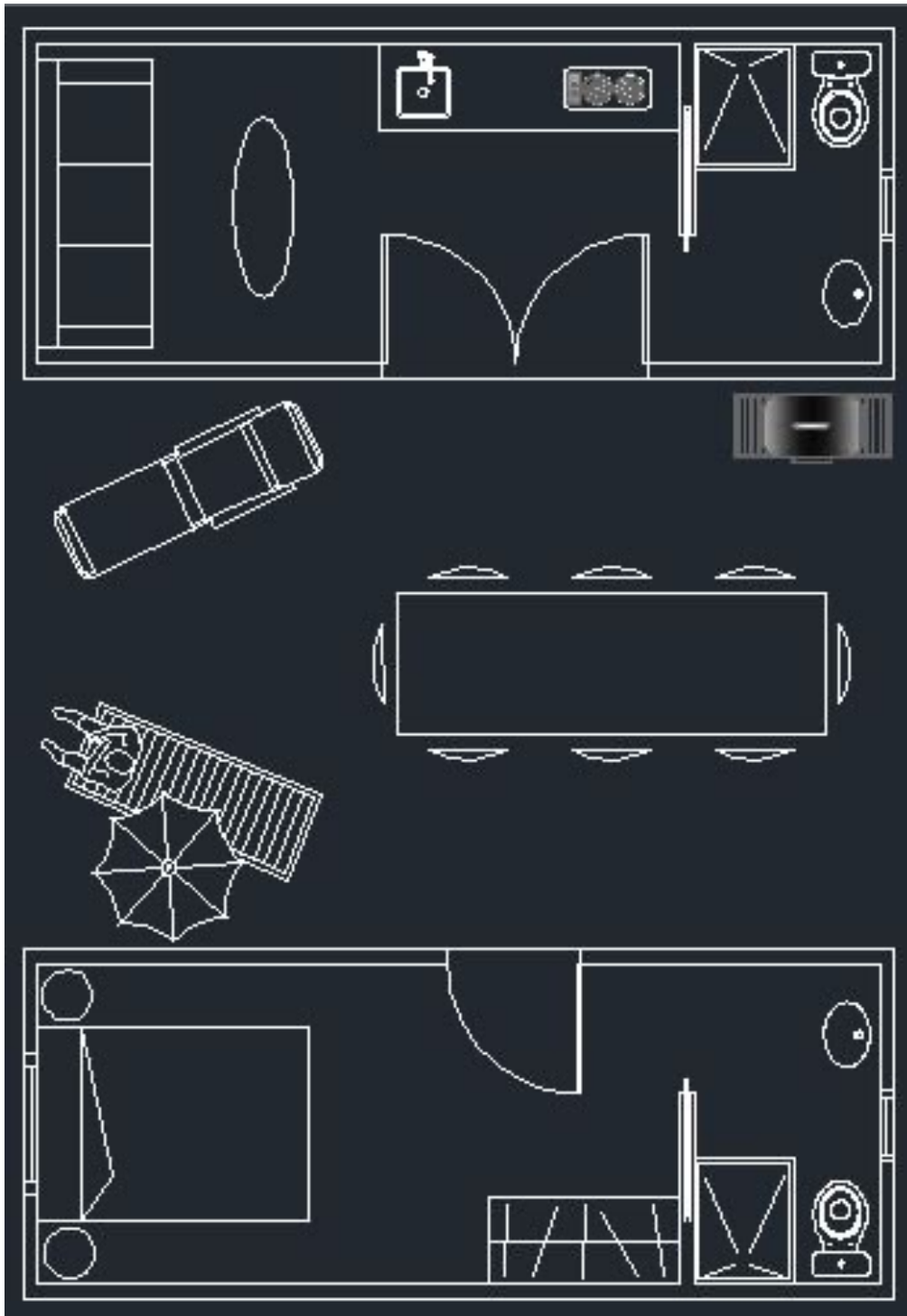
20 feet, Tiny House

Where a small space gives a feeling of spaciousness. This model has an open space with a living area with a sofa bed, kitchen and a bathroom with a shower, toilet and a sink.



What if I need more space? Let's get 2 containers!

Having 2 containers, one in front of each will create an amazing exterior area. We can install a pergola or a roof to increase the comfort and to enjoy fresh air.



Introduction to the Shippy House

The Shippy House module was born out of the desire to have a comfortable home while protecting the environment and minimizing monthly expenses.

This is achieved by using recycled shipping containers to build unique homes, which harvest sun to create electricity and benefit from passive principles of energy conservation.

Materials used

In order to achieve the highest energy efficiency ranking, we use double-glazed windows with argon gas and 8 cm of insulation in walls, floor and ceiling.

On top of that we also put down a wooden flooring AC5 as a cover of a solar heater floor system. In colder climates with less sunshine there may be a need for additional heating system, such as a stove.

In order to guarantee the mobility we use special walls that will not crack during the trip (vinyl finished, white color).

The exterior facade by the entrance will be covered with wood or a composite. The remaining exterior will show the bare container.

Supplies

Our modules have an electric and water installation and a waste plumbing that need to be connected to the grid. We also offer additional installation of off-grid solutions, such as photovoltaic panels and waste management tanks.

Legal aspects

We have designed the Shippy House as a portable module so that it could be placed anywhere. Therefore the Shippy Houses should stay mobile (no foundation or connections to the ground such as water, waste, electricity, etc).

However, local regulation should to be reviewed. In our experience, Shippy Houses work best as an addition to already built house.

Price list

	20 feet Basic	20 feet Tiny House
Electricity	✓	✓
Water	✗	✓
Bathroom	✗	✓
Size in meters (large - width - high)	5,8 - 2,1 - 2,2	5,8 - 2,1 - 2,2
Price	11.500 €	16.500 €

Furniture and AC devices are not included.
 The bathroom is equipped with toilet, shower and a sink.
 Kitchen is not equipped. We offer its installation in addition.
 A photovoltaic system can be added from 3.000 €.
 We use recycled containers. If you want a new one the cost will increase by 3.000 €

Delivery time and transport

Manufacturing times are from 3 to 7 weeks depending on the model and equipment.

The cost of transportation will be calculated based on the distance and accessibility to the destination from our location (Madrid, Spain). On average around 1€ per kilometre from Madrid and minimum 400€.

For landscaping work we suggest hiring a local company.

How to order

To begin work on your project and the details of your container a deposit of 500€ will be required. This deposit will be deducted from the final project price.

The order is confirmed after receiving a bank transfer of 50% of the budget. The remaining 50% is to be paid once the house is finished and before being sent.

FAQ

Can I connect more containers to have a bigger house?

Yes, you can but in that case you will need an architecture project and the total cost will increase to more than 100.000€ for a 60m2 house.

Is possible to use a 40 feet container instead of a 20 feet shipping container?

That's possible but in our experience it's more functional 2x20 feet container than a 40 feet shipping container because with 2 smaller containers we can include a beautiful and functional outside area.

Also 40 feet container are more likely to get damaged during transport because of the deformation of the 12 meters gap between the cargo holding points.

Can I customize the design?

Sure, we suggest the optimum layout in terms of space and energy efficiency but we can work on the best design according to your needs. If there is an extra cost it will be charged.

Does it get too cold or warm inside the Shippy House?

Our goal was to design a place as comfortable as possible with a minimum impact on the environment. All the visitors who have visited our Shippy House were surprised by how pleasant the temperature inside was.

In the warmest and coldest months may be good to adjust the temperature by more or less 2-3 degrees, which can easily be achieved by a small portable heater or a cooler.

Contact

manuel@shippyhouse.com

We are international and digital. We can talk by email, phone, Whatsapp, Skype, etc in fluent English and Spanish.

Have a [virtual tour](#) at the Shippy House model (better in a smartphone) and you can also take a look to this [video of a custom project](#).